



# MARCH PUMPS

1819 PICKWICK AVE., GLENVIEW, IL 60026-1306, U.S.A  
PHONE: (847) 729-5300 - FAX: (847) 729-7062  
WWW.MARCHPUMP.COM

## DESCRIPTION:

The LC-3M-MD is a centrifugal magnetic drive pump, eliminating the need for a shaft seal. Pumps are serviceable with a screwdriver. The "LC" is hermetically encapsulated and liquid cooled which allows the pump to be run fully submerged or in open air for complete moisture protection. It is rated IP 67.

## OPERATION:

The LC-3M-MD is not self-priming, lack a suction lift, and thus require a **flooded suction**. Pumps **cannot be run dry** because the impeller requires the liquid being pumped for lubrication. For liquids with a specific gravity greater than water, have a higher viscosity, or for elevated temperatures, a trimmed impeller may be necessary. For application assistance, contact March Pump.

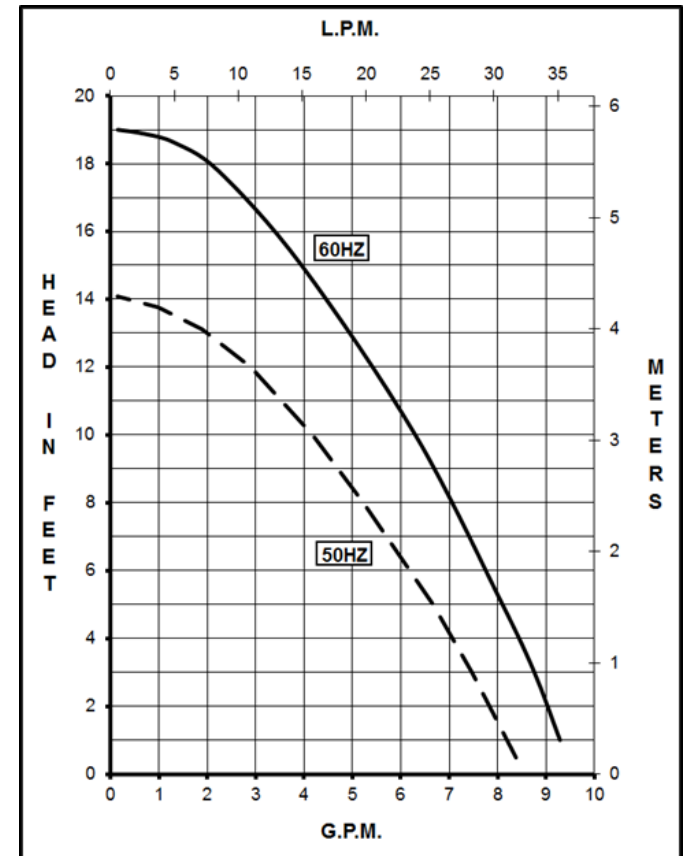
## ELECTRICAL:

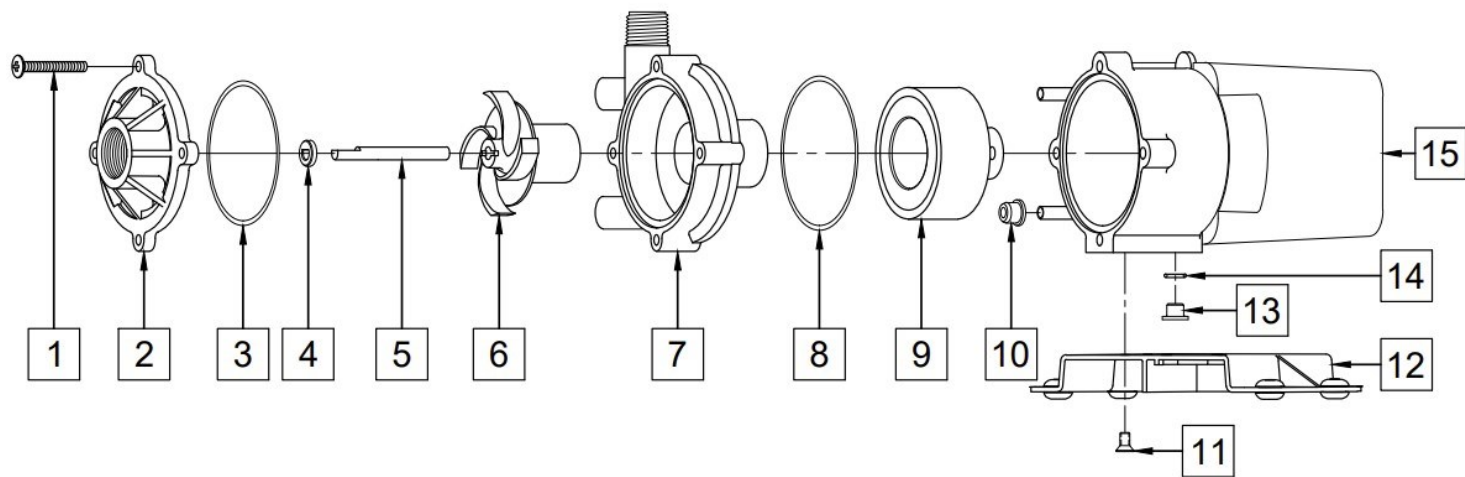
Motors are available in different electrical configurations such as 1 Phase 115 Volt 50/60 Hz or 230 Volt 50/60 Hz. The motors are not dual voltage. The motors are U.L. listed and rated as continuous duty. Models have a 6 foot (1.8 m) cord. The LC-3M-MD is Ignition Protected per SAE J1171 and ISO 8846.


Specifications		LC-3M-MD
Product	115V	0130-0177-0100
	230V	0130-0178-0100
Inlet-Outlet		3/4" FPT-1/2" MPT
Max Internal Pressure		25PSI (172kPa)
Max Liquid Temperature		130F (54C)

	60Hz										50Hz									
	Max Flow		Max Head			Electrical					Max Flow		Max Head			Electrical				
Model	GPM	LPM	Feet	PSI	M	Ph	Voltage	Amperage	HP	kW	GPM	LPM	Feet	PSI	M	Ph	Voltage	Amperage	HP	kW
LC-3M-MD	8.5	32.2	19	8.2	5.8	1	115 or 230	2.0 or 1.0	1/20	0.037	8.2	31	14.1	6.1	4.3	1	115 or 230	2.3 or 1.0	1/20	0.037
All specifications & data are based on pumping water & are intended as a guideline only. Specifications may vary with different motors.																				

## LC-3M-MD





LC-3M-MD			
Item	Part Number	QTY REQ	Description
1	0823-0008-1000	4	#10-32 x 1-1/2" Long Screw (Stainless)
2	0130-0021-1000	1	Cover with 3/4" FPT (Polypropylene)
3	0130-0011-1000	1	3/32" CS x 2-13/16" OD "O" Ring (Buna N)
4	0130-0028-1000	1	Thrust Washer (Ceramic)
5	0130-0024-1000	1	Shaft (Ceramic)
6	0130-0165-0200	1	Impeller with Carbon Bushing and Bare Ceramic Magnet (Polypropylene)
7	0130-0019-0100	1	Rear Housing with 1/2" MPT & Plug Assembly
8	0130-0025-1000	1	3/32" CS x 3" OD Bracket "O" Ring (Buna N)
9	0130-0043-0200	1	Drive Magnet
10	0125-0007-1000	2	Cooling Tube Seal (Buna N)
11	0130-0146-1000	2	Pan Head #10-32 x 1/2" Long Base Screw (Stainless Steel)
12	0125-0113-0100	1	Marine Base w/Grommets (Polypropylene)
13	0125-0110-1000	1	Plug for Motor Bracket
14	0210-0008-1000	1	1/16" CS x 7/16" OD "O" Ring (Viton)
15	Not Available	1	LC Epoxy Motor, Bracket, Cord Assembly
NOTE: Contact Factory for other materials and/or parts not listed. <span style="float: right;">Special voltage motors are available upon special order.</span>			
<b>Materials in contact with the liquid: LC-3CP-MD:</b> Polypropylene, Cupric Nickel, Buna N, Ceramic, Carbon, Ceramic Magnet. When Submerged: Epoxy, Stainless Steel, Noryl and Cord.			
<b>WARRANTY:</b> <a href="https://www.marchpump.com/about/warranty/">https://www.marchpump.com/about/warranty/</a>			
For the General Installation Manual, see this link <a href="https://www.marchpump.com/wp-content/uploads/2019/07/march-pump-general-installation-guide-0750-040.pdf">https://www.marchpump.com/wp-content/uploads/2019/07/march-pump-general-installation-guide-0750-040.pdf</a> Or Scan QR Code <div style="text-align: center;">  </div>			
0130-0179-1000 Revised 8.26.2025			