



MARCH PUMPS

1819 PICKWICK AVE., GLENVIEW, IL 60026-1306, U.S.A
 PHONE: (847) 729-5300 - FAX: (847) 729-7062
 WWW.MARCHPUMP.COM

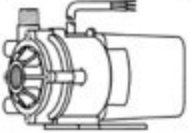
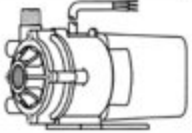
LC-3CP-MD

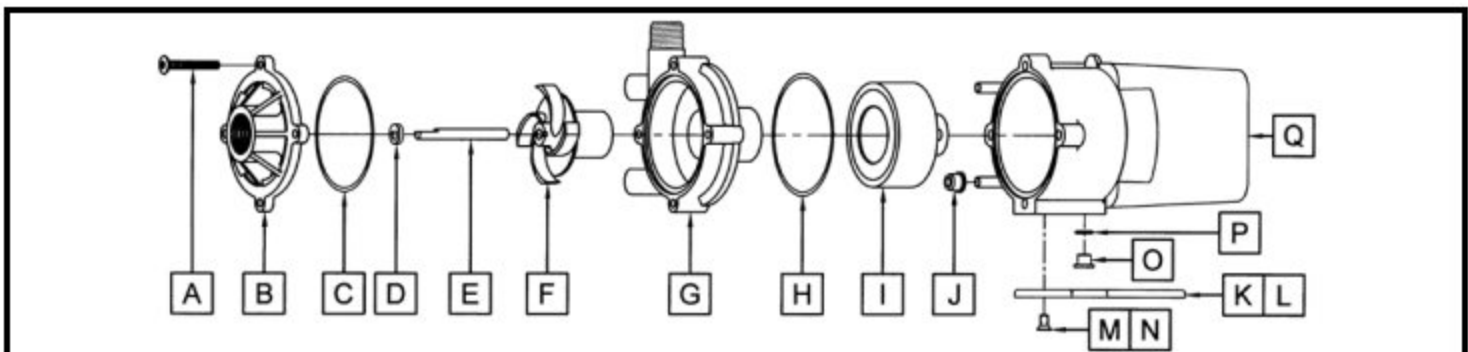
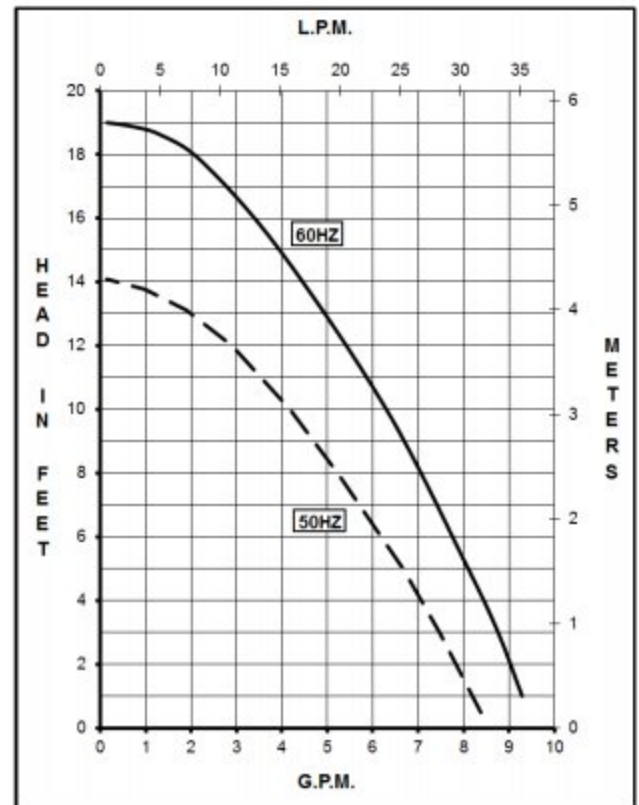
DESCRIPTION: The LC-3CP-MD is a centrifugal magnetic drive pump, eliminating the need for a shaft seal. Pumps are serviceable with a screwdriver. The "LC" is hermetically encapsulated and liquid cooled which allows the pump to be run fully submerged or in open air for complete moisture protection.

OPERATION: Pumps are not self-priming, lack a suction lift, and thus require a **flooded suction**. Pumps **cannot be run dry** because the impeller requires the liquid being pumped for lubrication. For liquids with a specific gravity greater than water, have a higher viscosity, or for elevated temperatures, a trimmed impeller may be necessary. For application assistance, contact March Pump.

ELECTRICAL: Motors are available in different electrical configurations such as 115 Volt 50/60 Hz, or 230 Volt 50/60 Hz, 1 phase. The motors are U.L. listed and rated as continuous duty. Models have a 6 foot (1.8 m) cord.

LIMITED WARRANTY: March pumps are guaranteed only against defects in workmanship or materials for a period of one year from date of manufacture pumping water. For the complete warranty and to register online go to www.marchpump.com/warranty-registration

MODELS	LC-3CP-MD (115 V)				LC-3CP-MD (230 V)			
								
Product #	0130-0158-0200				0130-0159-0200			
UNITS	60 Hz		50 Hz		60 Hz		50 Hz	
Max Flow	8.5 gpm		31 lpm		8.5 gpm		31 lpm	
Max Head	19 ft / 8.2 psi		4.3 m		19 ft / 8.2 psi		4.3 m	
Inlet - Outlet	3/4" FPT - 1/2" MPT				3/4" FPT - 1/2" MPT			
Max Internal Pressure	25 psi / 172 kPa				25 psi / 172 kPa			
Max Liquid Temperature	130 °F / 54 °C				130 °F / 54 °C			
Packed Weight	7.90 lbs / 3.58 kg				7.95 lbs / 3.60 kg			
ELECTRICAL 60 Hz	W	A	Hp	Rpm	W	A	Hp	Rpm
	120	2.0	1/20	3450	120	1.0	1/20	3450
ELECTRICAL 50 Hz	W	A	kW	Rpm	W	A	kW	Rpm
	137	2.3	0.037	2850	100	1.0	0.037	2850
OVERALL SIZE	Height	Width	Length	Height	Width	Length	Height	Width
	4.87"	4.75"	7.38"	4.87"	4.75"	7.38"	4.87"	4.75"
	12.3 cm	12.0 cm	18.7 cm	12.3 cm	12.0 cm	18.7 cm	12.3 cm	12.0 cm
Materials in Contact with Solution:	Polypropylene, Cupric Nickel, Buna N, Ceramic, Ceramic Magnet							
	Also when submerged: Epoxy, Stainless, Ryton, & Cord							
All specifications/values are based on pumping water and are intended as a guideline only. Values may vary with different motors.								



#	DESCRIPTION	MATERIAL	QTY.	PART #	#	DESCRIPTION	MATERIAL	QTY.	PART #
A	Screw #10-32 x 1-1/2" Lg.	Stainless	4	0823-0008-1000	J	Cooling Tube Seal	Buna N	2	0125-0007-1000
B	Cover	Polypropylene	1	0130-0021-1000	K	Mounting Base	Polypropylene	1	0125-0037-1000
C	"O" Ring 3/32" CS x 2-13/16" OD	Buna N	1	0130-0011-1000	L	*†Marine Base w/Grommets	Polypropylene	1	0125-0113-0100
D	Thrust Washer	Ceramic	1	0130-0028-1000	M	Base Screw	Stainless	2	0130-0132-1000
E	Shaft	Ceramic	1	0130-0024-1000	N	*†Marine Base Screw	Stainless	2	0130-0146-1000
F	Impeller w/Ceramic Magnet	Polypropylene	1	0130-0020-0100	O	Plug for Motor Bracket		1	0125-0110-1000
G	Rear Housing & Plug Assembly	Polypropylene	1	0130-0019-0100	P	"O" Ring 1/16" CS x 7/16" OD	Viton	1	0210-0008-1000
H	Bracket "O" Ring 3/32" CS x 3" OD	Buna N	1	0130-0025-1000	Q	L.C. Epoxy Motor, Bracket, Cord Assembly		N/A	Not Available
I	Drive Magnet		1	0130-0043-0200					

NOTE: Contact Factory for other materials and/or parts not listed.

*Not Shown †Option 0130-0036-1000 R27